

**KOBI**

**DIAMOND LIFT**

**stertil**



HEAVY-DUTY IN-GROUND LIFT

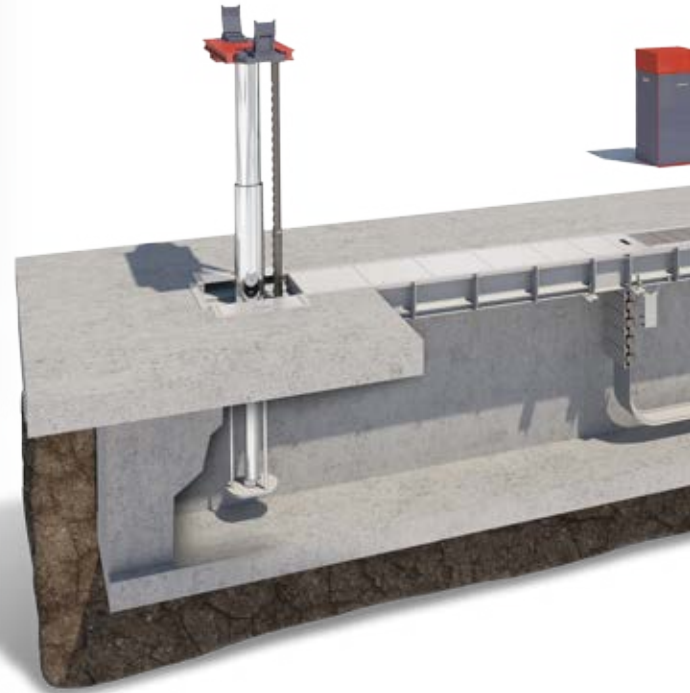
# DIAMONDLIFT

The superior, flexible solution  
with a lifting capacity of  
32,000 lbs per piston



**STERTIL**  
SUPERIOR SOLUTIONS BY  
QUALITY PEOPLE

# Superior solutions by quality people



DIAMONDLIFT with Frame

The Stertil Group provides customized and technically advanced solutions for heavy duty lifting requirements and dock equipment for customers throughout the world, including the best possible service from skilled local partners. These superior solutions are conceived, developed and implemented by a team of professional specialists with unique expertise. Thanks to the quality of its people, its entirely in-house production and its international organisation, Stertil-Koni is the world's number one in the field of heavy duty mobile column lifts.

# Stertil-Koni In-Ground DIAMONDLIFT



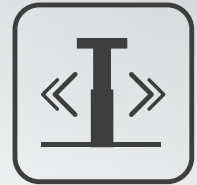
DIAMONDLIFT with Cassette



HIGHEST  
SAFETY LEVEL



ENVIRONMENTALLY  
FRIENDLY



COMPLETELY  
FLEXIBLE

## Safety, Environmentally-friendly and completely Flexible

The DIAMONDLIFT telescopic piston lifts ingeniously combine these benefits and set a new benchmark for in-ground piston lifts. The DIAMONDLIFT versions give you the choice in a variety of workshop situations. Whether you have a new build situation, a renovation and even with difficult building conditions, the DIAMONDLIFT configurations can be made to fit your specific needs.

With the highest level of safety and accredited third party testing and validation by ALI/ETL-Intertek resulting in a superior innovative lifting solution. The Stertil-Koni DIAMONDLIFT is the easiest to use, most reliable and environmentally friendly in-ground piston lift on the market today. Like real diamonds, the Stertil-Koni DIAMONDLIFT is virtually indestructible.



## Maximum innovative industry safety

- The gravity engaged locking has increments of 3" with 21 locking positions starting from 8 1/2" from floor level (ideal for tires bays)
- The locking system can be used as a parking system. When you lower the lift in the locks it fully carries the vehicle. the pistons are free of pressure and therefore no risk of unwanted lowering
- Innovative ultrasonic sensors provide real-time synchronization for ultimate safety
- The integrated cover systems makes sure all holes are covered so no risk of tripping
- Programmable lifting height (ideal for double decker buses/tall vehicles)
- The locking bars are made out of extremely strong hardened, nitro carburized steel that is fully capable of holding the entire weight of the vehicle

- No high-power electric components in the pit complies with Class 1 / Div. 1 standards. (all electric components located above 18")
- Audio and visual safety features e.g. indicator lamp is illuminated when lift is fully lowered and it is safe for the vehicle to exit the bay
- Optional detachable wired remote control with quick disconnect: for safe spotting of the lift to the vehicle
- Maximum width lifting support/bolster 56"

## Easy to use and maintain

- The gravity engaged locking systems enable easy service and can be accessed from floor level
- Optional automatic wheel base positioning allowing precise relocation of the moveable lifting unit via a LCD screen which stores up to 16 positions



- Easy access for manual lowering (e.g. if there is a power outage)
- Easy to use due to simple intuitive controls:
  - All power units and control components are located in the above-ground console to allow easy access for troubleshooting and maintenance
  - The DIAMONDLIFT high pressure hydraulics, only require 4.8 gallons of biodegradable oil per piston
  - Easy to read oil gauges

### Sliders, not rollers

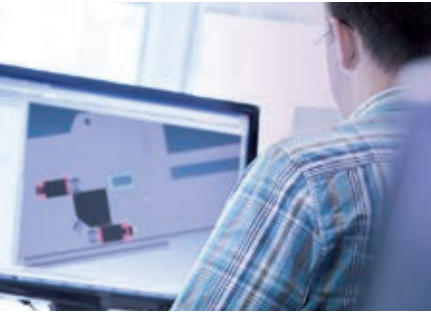
Instead of utilizing traditional rollers which may cause a high point load, the DIAMONDLIFT moveable lifting unit(s) with the aluminum trench-covering system travel on UHMW (Ultra High Molecular Weight) polyethylene slides atop a stainless steel guide which are maintenance-free.

### Superior and environment friendly

- The top portion of the DIAMONDLIFT cassette is completely hot-galvanized (also applicable for the frame version)
- DiamondGuard is a high-quality coating that protects the cassettes both internally and externally against electrolysis and corrosion
- DiamondGuard provides a barrier protection against hazardous workshop fluids and prevents soil contamination

### Highly Durable Pistons

- The DIAMONDLIFT telescopic pistons have all the critical seals by design inside, away from potential damage by debris
- Hard-chrome plated piston rods for maximum protection against corrosion and wear in the workshop



## Strong practical rolling covers that simply work

- The rolling covers of the moveable piston, for both DIAMONDLIFT versions are specially designed and made of anodized aluminum with a skid-resistant surface
- DIAMONDLIFT rolling covers are capable of handling a wheel load of 13,500 lbs as well as a point load of up to 7,500 lbs on a 2"x 2" contact area (perfect when using either axle stands or transmission jacks)
- Continuous hinge with no moving parts
- Covers are flush to the finished floor at all times, no tripping hazard
- Moveable piston assembly and cover system is horizontally positioned utilizing an inverted rack and pinion design hydraulically-driven
- The hydraulic drive system is self-aligning and self-cleaning

## Wide range of Applications

- The lifting capacity of 32,000 lbs per piston, makes the DIAMONDLIFT versatile
  - The DIAMONDLIFT can be supplied with 2 or 3 pistons
  - The available horizontal travel range of the moveable pistons for the DIAMONDLIFT cassette versions is 10 ft, 13 ft, or 17 ft providing maximum flexibility for a wide range of commercial vehicles
- For the frame versions multiple travel ranges are possible thanks to the modular configuration of frames
- An economical alternative for the aluminium rolling covers is a version with steel cover sliding plates
- High lifting height, up to 73"
  - Standardly equipped with a full set of lifting adapters

# The DIAMOND LIFTs any fleet



Standard



Optional

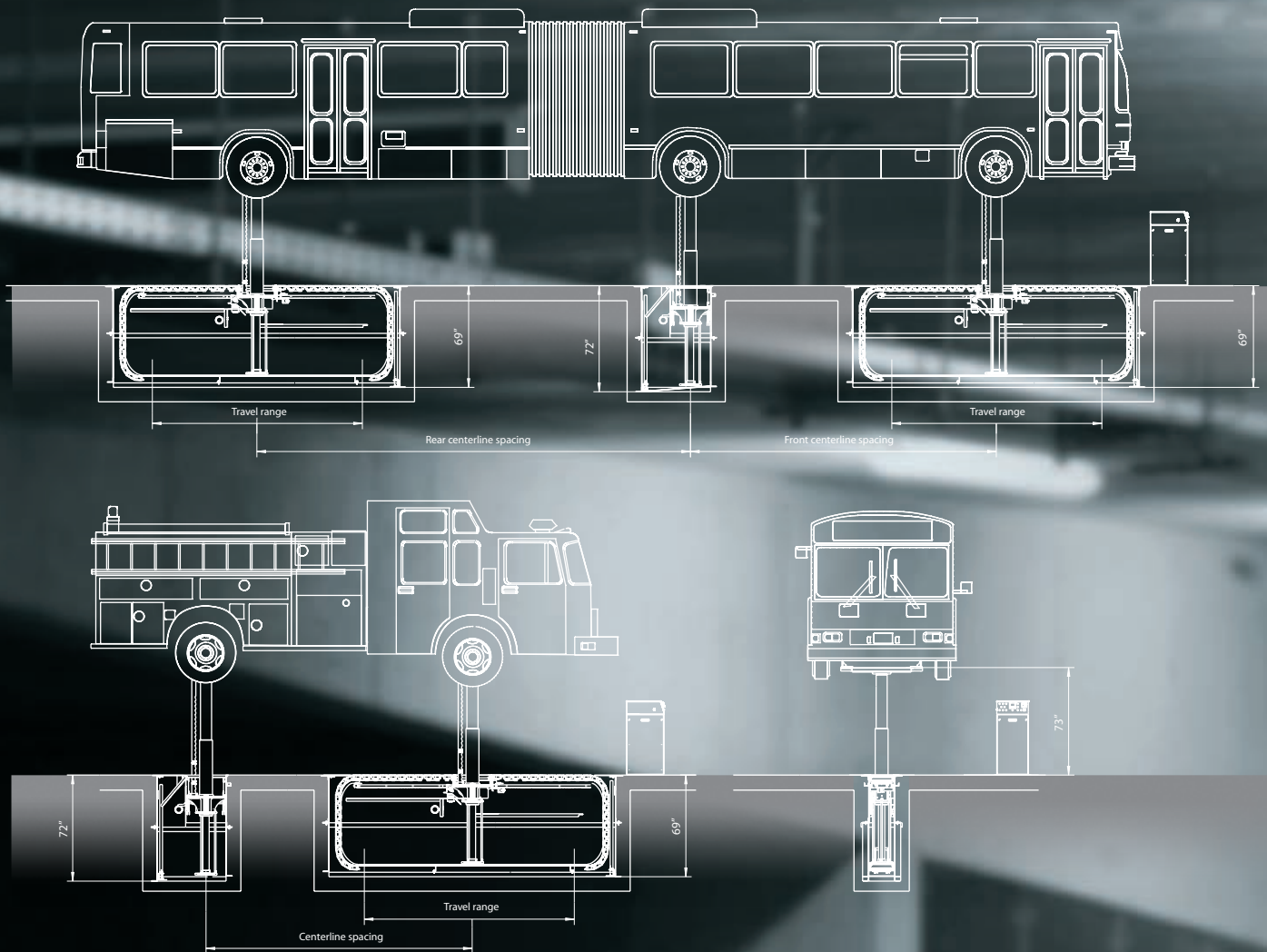


Not available

Versions	DIAMONDLIFT with cassette	DIAMONDLIFT frame with rolling covers	DIAMONDLIFT frame with sliding plates
Aluminum rolling cover system	✓	✓	✗
Steel sliding cover plates system	✗	✗	✓
Recess pockets <sup>1</sup> (bolsters are flush with the floor in lowest position)	✓	○	Optional for fixed only. Not available for movable
Integrated covers for recess pockets	✓	○ <sup>1</sup>	Optional for fixed only. Not available for movable
Maximum installation depth	72"	67"	67"
Minimum wheel base possible	62"	48"	48"
Below grade wheel spotting dishes	✓	○	○
Liquid detection system	✓	○	○

<sup>1</sup> When optional Recess pockets are ordered they will be supplied with integrated covers

# Technical specifications



Specification	DIAMOND 64	DIAMOND 96	
Lifting capacity	64,000	96,000	Lbs
Lifting height	73		Inch
Lifting time	90		Sec
Compressed air supply	Filtered/regulated for 90 PSI at 5CFM		
Electrical supply	3 phase, 208-230/460/575		Volt
Motor power	2 x 5	3 x 5	HP

\* Technical specifications are available at: [www.stertil-koni.com](http://www.stertil-koni.com)

## More information?

For more information about the DIAMONDLIFT, or any of Stertil-Koni's other top notch products, please do not hesitate to contact us. We will be pleased to assist you.



Stertil-Koni U.S.A. Inc.  
 200 Log Canoe Circle  
 Stevensville, Maryland 21666  
 Tel. 410-643-9001  
 Toll free 800-336-6637  
 Fax 410-643-8901  
[www.stertil-koni.com](http://www.stertil-koni.com)  
 E-mail: [lifts@stertil-koni.com](mailto:lifts@stertil-koni.com)